

June 25, 2014

**Successful completion of the Acquisition and Production of Geospatial Data for the NSDI,
Sumatra Island, Indonesia**

- Created data is comparable to the national land of Japan -

PASCO Corporation (Tokyo, Japan; President and CEO, Yuji Mesaki) started acquisition and production of geospatial data in Indonesia from December 2010 and successfully completed on June 14th, 2014 on schedule by completing deliverables to the Indonesian Government.

■ **Overview of Sumatra NSDI Project**

The Government of the Republic of Indonesia and the Japan International Cooperation Agency (JICA) toward the National Geo-Spatial Data Infrastructure (NSDI) Development formulated and entered into contract in March, 2007. The Government represented by the Agency for Geo-Spatial Information (BIG) concluded a contract for the NSDI Development Project (IP-544): Component 1: Acquisition and Production of Geo-Spatial Data of Sumatra Island with PASCO in December, 2010 and PASCO developed Geospatial data at a scale of 1:50,000 covering 303,439 sq.km of Sumatra Island equivalent to 64% of whole island, and at a scale of 1:10,000 covering 4 cites.

Sumatra Island has tropical rainforest climate and there are difficulties to acquire aerial images by optical cameras due to easy influence of the weather conditions. PASCO therefore acquired the aerial images from X-band Synthetic Aperture Radar (SAR) sensor mounted on the airplane. PASCO's accumulated processing technology of TerraSAR-X satellite since 2007 was utilized for mapping from SAR images. Moreover archived imageries of Advance Land Observation Satellite (ALOS) "Daichi", which was in operation from 2006 to 2011, were utilized as the reference information and 300 local engineers were employed for this project to develop the data equal to entire land of Japan (Approx. 377,961 sq.km).

The developed data will be accessible by the concerned government ministries within the national data sharing system in Indonesia. These geospatial data will be applicable toward national land development, natural resources management, environment conservation, and disaster prevention as important infrastructural information.

PASCO will continue to contribute to establish safety and secure society in booming the ASEAN countries such as Indonesia through advanced Geospatial Services.

■ **Inquiry for this release:**

Global Business Division

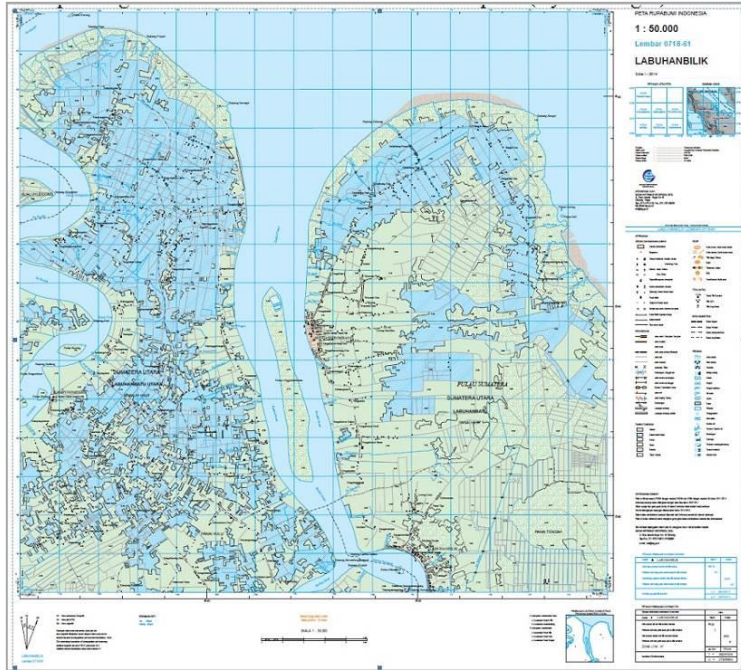
PASCO CORPORATION

TEL: 03-6412-2888

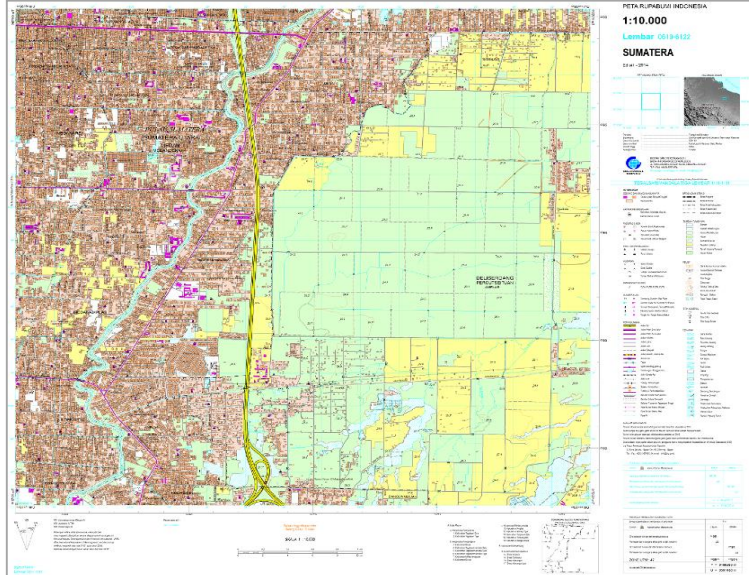
Email: intl_info@pasco.co.jp

<http://www.pasco.co.jp/contact/>

(Appendix)



Sample of geospatial data at 1:50,000 scale



Sample of geospatial data at 1:10,000 scale